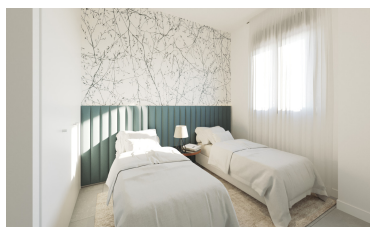


Town house in Manilva



2



2



76m²



N/A



✓

- Category - Resale
- Features - Double Glazing
- Features - Gym
- Features - Storage Room
- Garden - Communal
- Utilities - Drinkable Water
- Climate Control - Cold A/C
- Features - Ensuite Bathroom
- Features - Private Terrace
- Features - WiFi
- Garden - Private
- Utilities - Electricity
- Climate Control - Hot A/C
- Features - Fitted Wardrobes
- Features - Satellite TV
- Furniture - Not Furnished
- Kitchen - Fully Fitted
- Utilities - Telephone

(+34) 622 47 46 61

www.palmcasas.com - info@palmcasas.com



(+34) 622 47 46 61

www.palmcasas.com - info@palmcasas.com

Additional Property Features

- Views - Sea