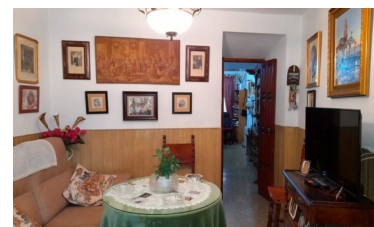
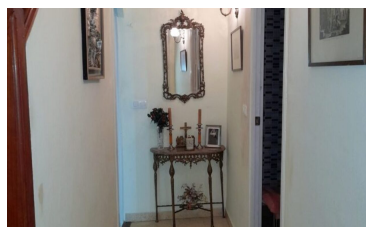
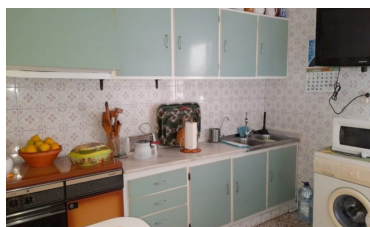
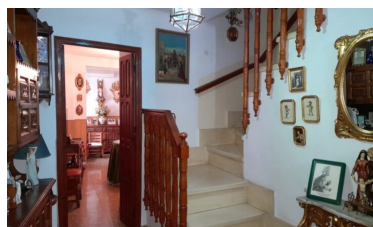


Town house in Alora



3



1



144m²



100m²



N/A

- Close to all Amenities
- Close to schools
- Walk To Bars/Restaurants

- Close To Bus Station/Stop
- Mains Electricity
- Walk to shops

- close to medical facilities
- Mains water



(+34) 622 47 46 61

www.palmcasas.com - info@palmcasas.com