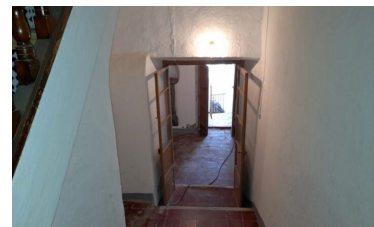
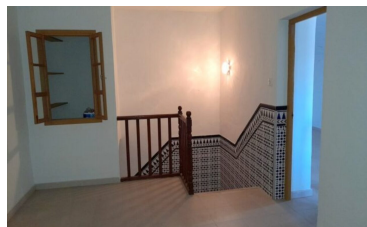
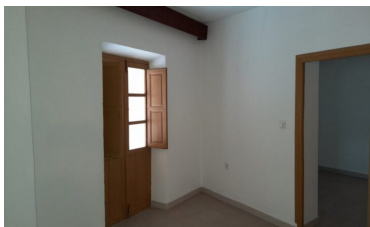


## Town house in Alora



5



1



250m<sup>2</sup>



116m<sup>2</sup>



N/A

- Close to all Amenities
- Close to schools
- Patio
- Walk To Bars/Restaurants

- Close To Bus Station/Stop
- Mains Electricity
- Private Garage
- Walk to shops

- close to medical facilities
- Mains water
- Roof Terrace



(+34) 622 47 46 61

[www.palmcasas.com](http://www.palmcasas.com) - [info@palmcasas.com](mailto:info@palmcasas.com)