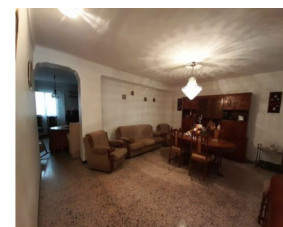
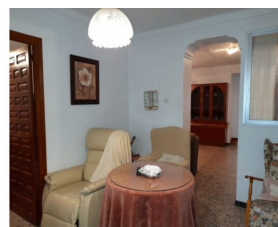


Apartment in Alora



3



1



225m²



147m²

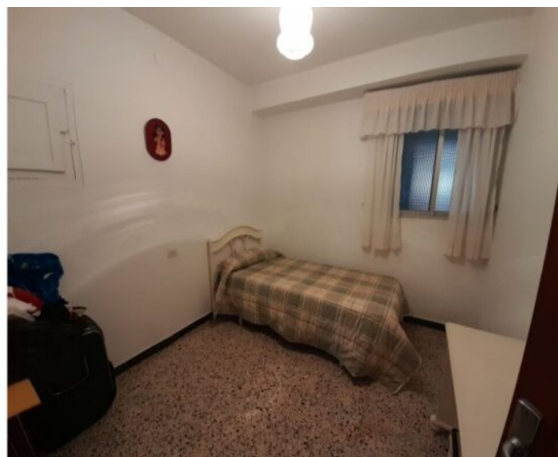
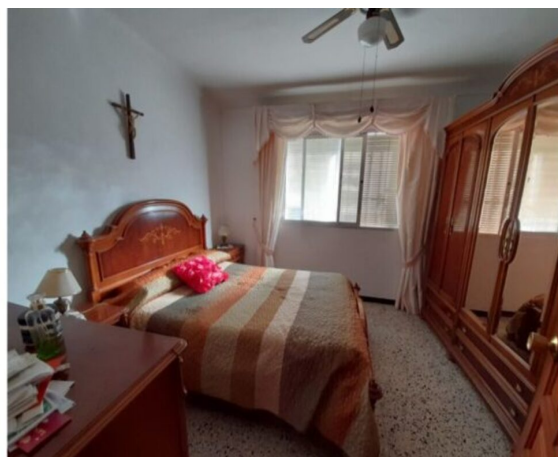


N/A

- Close to all Amenities
- Close to School
- Patio

- Close To Bus Station/Stop
- Mains Electricity
- Walk To Bars/Restaurants

- close to medical facilities
- Mains water
- Walk to shops



(+34) 622 47 46 61

www.palmcasas.com - info@palmcasas.com