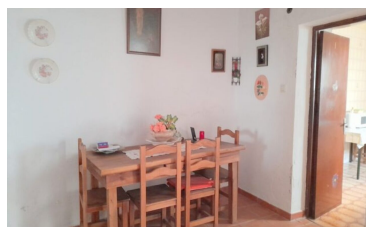
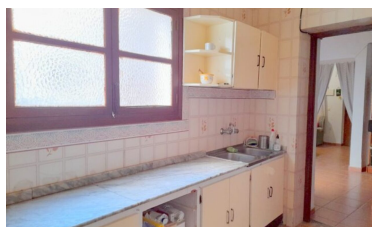


Town house in Alora



4



1



147m²



81m²



N/A

- Close to all Amenities
- Close to schools
- Roof Terrace

- Close To Bus Station/Stop
- Mains Electricity
- Walk To Bars/Restaurants

- close to medical facilities
- Mains water
- Walk to shops



(+34) 622 47 46 61

www.palmcasas.com - info@palmcasas.com