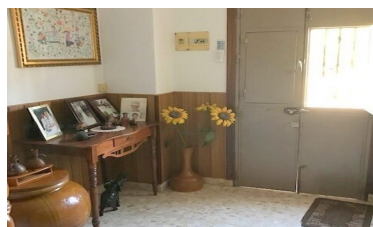


## Town house in Alora



4



2



195m<sup>2</sup>



171m<sup>2</sup>



N/A

- Close To Bus Station/Stop
- Mains Electricity
- Private Garage

- close to medical facilities
- Mains water
- Walk To Bars/Restaurants

- Close to schools
- Parking Space
- Walk to shops



(+34) 622 47 46 61

[www.palmcasas.com](http://www.palmcasas.com) - [info@palmcasas.com](mailto:info@palmcasas.com)