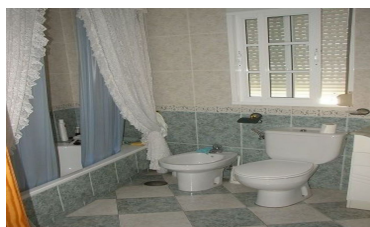


Town house in Alora



2



1



270m²



217m²



N/A

- close to medical facilities
- freehold
- Mains Sewage
- Private Garage
- Security Grills
- Storage room

- Close to School
- internet
- Mains water
- Private parking
- Short Drive To Bars/Restaurants
- Terrace

- Close to schools
- Mains Electricity
- mountain views
- Secure parking
- Spacious Accommodation
- traditional village



(+34) 622 47 46 61

www.palmcasas.com - info@palmcasas.com

Additional Property Features