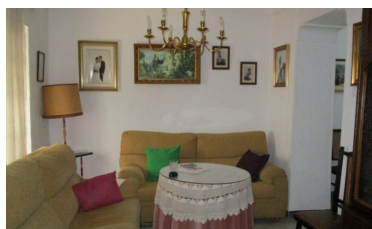


## Town house in Alora



4



2



253m<sup>2</sup>

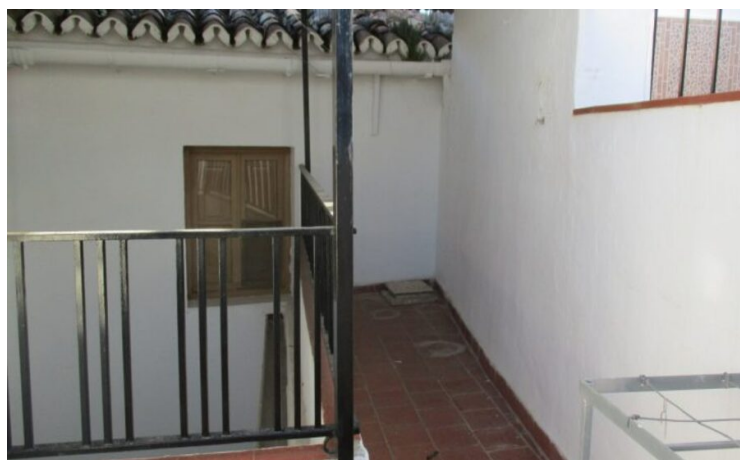
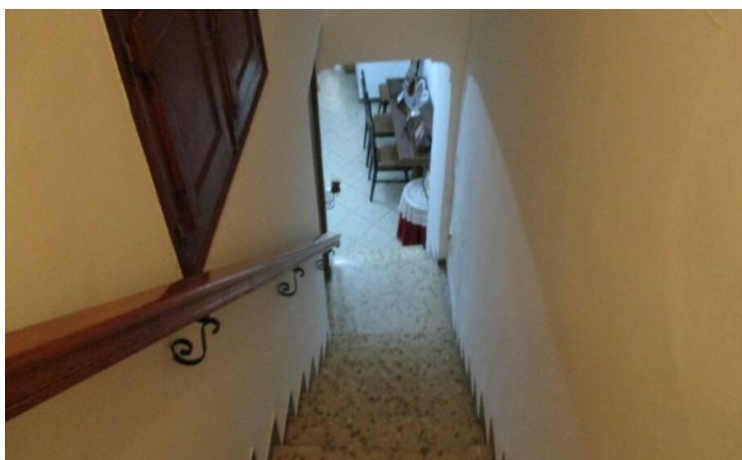


92m<sup>2</sup>



N/A

- Community pool
- Mains Electricity
- Nr Schools
- Train Station Nearby
- Country/Mountain Views
- Mains water
- On Bus Route
- Walking Distance to Shops etc
- Good Motorway Access
- Nr Medical Centre
- Sports Facilities



(+34) 622 47 46 61

[www.palmcasas.com](http://www.palmcasas.com) - [info@palmcasas.com](mailto:info@palmcasas.com)