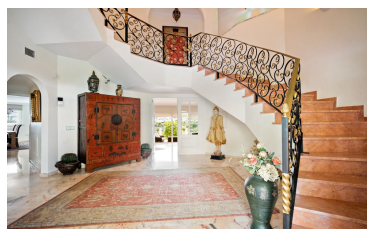


Villa in BenahavÃ-s



6



7



555m²



2,750m²



N/A

- | | | |
|--|--|--|
| <ul style="list-style-type: none"> • Category - Luxury • Features - Basement • Features - Staff Accommodation • Kitchen - Fully Fitted • Parking - More Than One • Security - Alarm System | <ul style="list-style-type: none"> • Category - Resale • Features - Double Glazing • Furniture - Optional • Parking - Covered • Parking - Private • Security - Entry Phone | <ul style="list-style-type: none"> • Features - Barbeque • Features - Marble Flooring • Garden - Private • Parking - Garage • Security - 24 Hour Security • Security - Gated Complex |
|--|--|--|



(+34) 622 47 46 61

www.palmcasas.com - info@palmcasas.com

Additional Property Features

- ~~Settles - Electricity~~ Golf