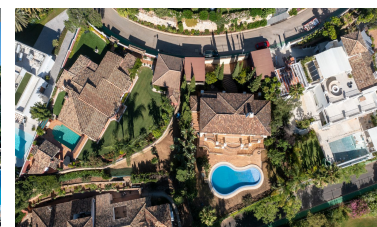


Villa in BenahavÃ-s



6



5



579m²



1,050m²



- Category - Resale
- Features - Covered Terrace
- Features - Marble Flooring
- Features - WiFi
- Kitchen - Fully Fitted
- Security - 24 Hour Security
- Features - Barbeque
- Features - Ensuite Bathroom
- Features - Private Terrace
- Furniture - Not Furnished
- Parking - Covered
- Security - Alarm System
- Features - Basement
- Features - Fitted Wardrobes
- Features - Storage Room
- Garden - Private
- Parking - More Than One
- Security - Gated Complex

(+34) 622 47 46 61

www.palmcasas.com - info@palmcasas.com



(+34) 622 47 46 61

www.palmcasas.com - info@palmcasas.com

Additional Property Features

- Utilities - Telephone