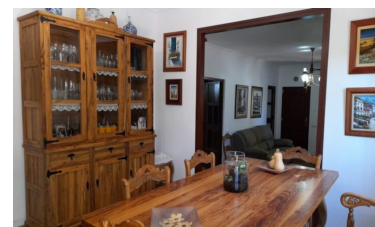


Country House in Alora



5



2



416m²



10,000m²



N/A

- beautiful garden
- Fruit Trees
- Mains Electricity
- Patio
- Built to High Standards
- internet
- Mains water
- Short Drive To Shops
- Close to all Amenities
- Irrigation system
- Parking Space
- Solar Hot Water



(+34) 622 47 46 61

www.palmcasas.com - info@palmcasas.com