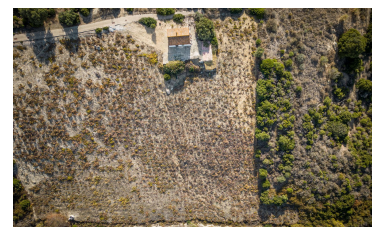
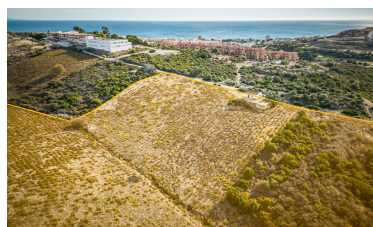


## Country House in Manilva



2



2



60m<sup>2</sup>



46,000m<sup>2</sup>



N/A

- Category - Bargain
- Condition - Restoration Required
- Garden - Private
- Pool - Room For Pool
- Setting - Country
- Views - Mountain
- Category - Investment
- Features - Basement
- Parking - More Than One
- Setting - Close To Shops
- Setting - Village
- Views - Panoramic
- Category - Resale
- Features - Private Terrace
- Parking - Open
- Setting - Close To Town
- Views - Country
- Views - Sea





(+34) 622 47 46 61

[www.palmcasas.com](http://www.palmcasas.com) - [info@palmcasas.com](mailto:info@palmcasas.com)

## Additional Property Features