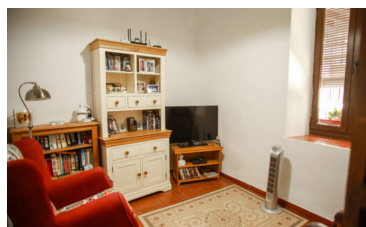


Town house in Alora



4



2



181m²



1,090m²



N/A

- Air Conditioning Hot/Cold
- Close to schools
- Mains Electricity
- Short Drive To Shops
- Walk to shops

- Close To Bus Station/Stop
- Fireplace
- Mains water
- Storage room
- workshop

- close to medical facilities
- Garden
- Short Drive To Bars/Restaurants
- Terrace



(+34) 622 47 46 61

www.palmcasas.com - info@palmcasas.com