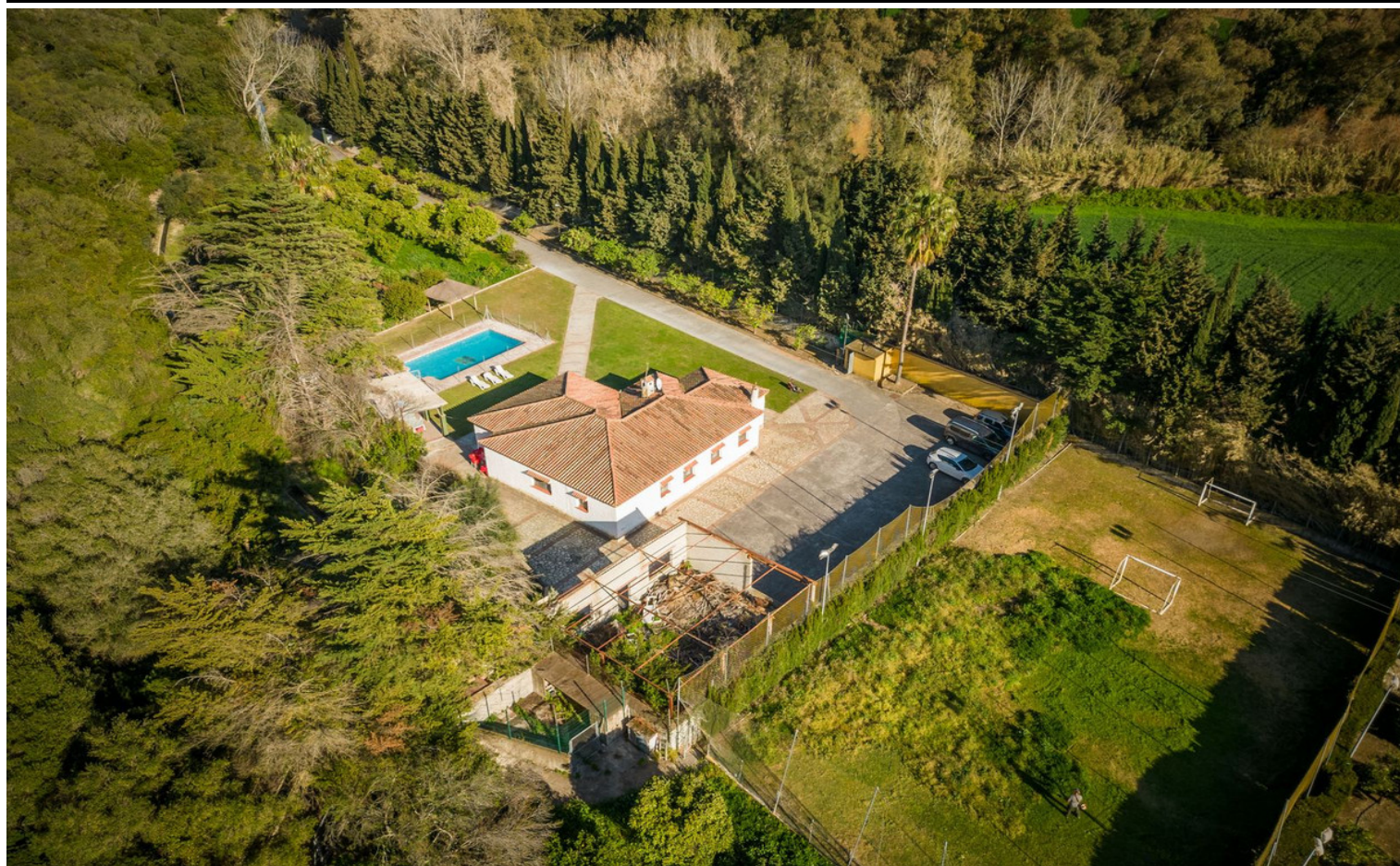


Country House in Jimena de la Frontera



5



2



239m²



8,386m²



- Category - Resale
- Features - Covered Terrace
- Features - Storage Room
- Kitchen - Fully Fitted
- Pool - Private
- Setting - Village
- Climate Control - Fireplace
- Features - Fitted Wardrobes
- Garden - Easy Maintenance
- Parking - Garage
- Security - Gated Complex
- Utilities - Electricity
- Condition - Excellent
- Features - Private Terrace
- Garden - Private
- Parking - Private
- Setting - Town
- Utilities - Telephone

(+34) 622 47 46 61

www.palmcasas.com - info@palmcasas.com



(+34) 622 47 46 61

www.palmcasas.com - info@palmcasas.com

Additional Property Features

- Views - Garden