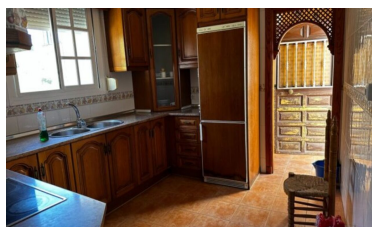
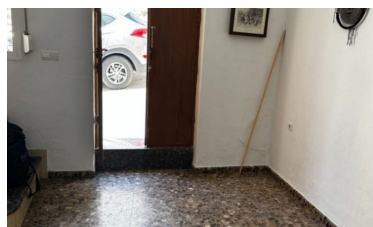


## Town house in Alora



4



1



229m<sup>2</sup>

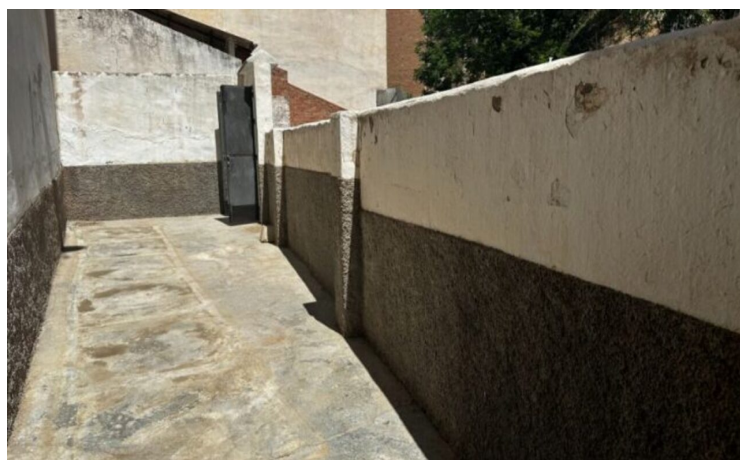
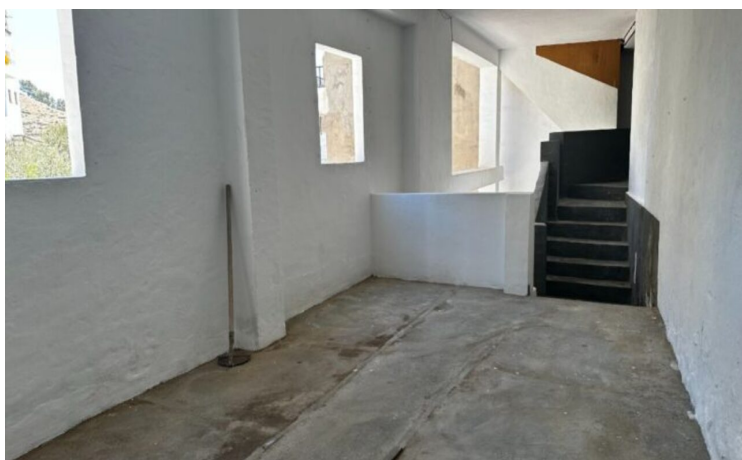
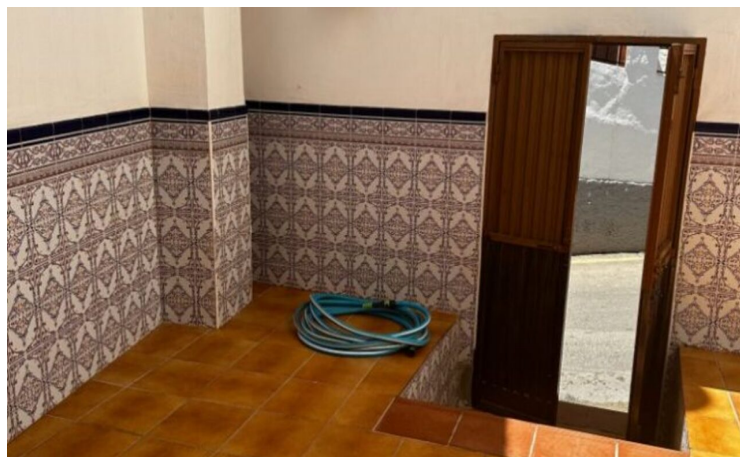


180m<sup>2</sup>



N/A

- Close to all Amenities
- Close to schools
- Mains water
- Short Drive To Bars/Restaurants
- Walk to shops
- Close To Bus Station/Stop
- Fireplace
- Private Garage
- Village Location
- close to medical facilities
- Mains Electricity
- Roof Terrace
- Walk To Bars/Restaurants



(+34) 622 47 46 61

[www.palmcasas.com](http://www.palmcasas.com) - [info@palmcasas.com](mailto:info@palmcasas.com)