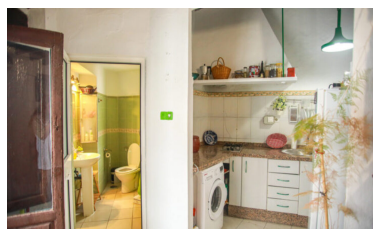


Town house in Alora



4



1



183m²



116m²

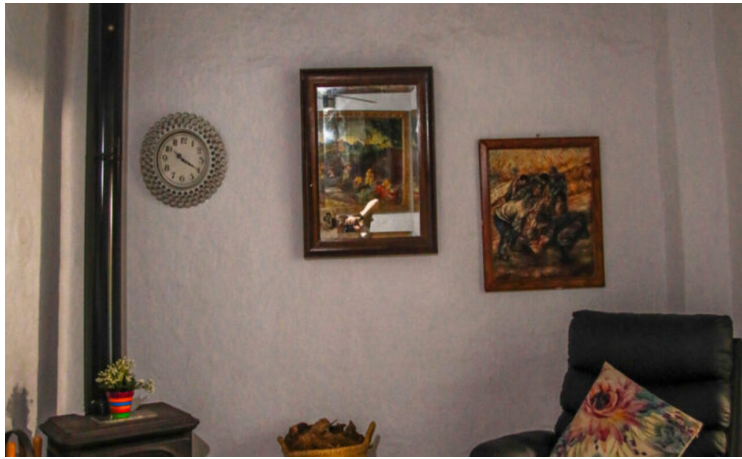


N/A

- Close to all Amenities
- Close to schools
- mountain views
- Walk to shops

- Close To Bus Station/Stop
- Mains Electricity
- Terrace

- close to medical facilities
- Mains water
- Walk To Bars/Restaurants



(+34) 622 47 46 61

www.palmcasas.com - info@palmcasas.com