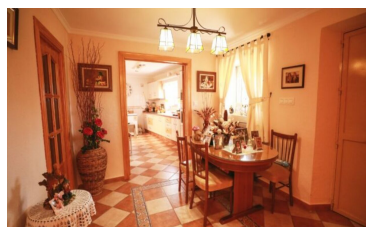
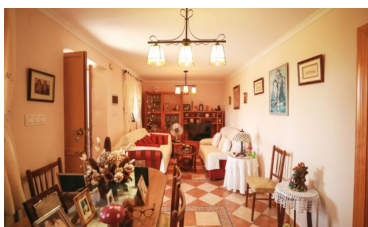
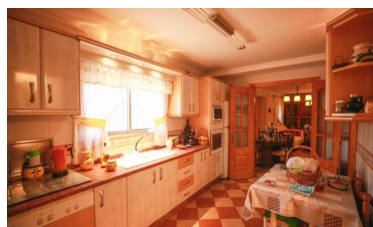


## Country House in Alora



4



1



189m<sup>2</sup>



1,544m<sup>2</sup>



N/A

- Air Conditioning Hot/Cold
- Close To Bus Station/Stop
- Covered Terrace
- Mains Electricity
- Short Drive To Bars/Restaurants
- BBQ
- close to medical facilities
- Fruit Trees
- Parking Space
- Short Drive To Shops
- Close to all Amenities
- Close to schools
- Irrigation system
- Scenic Views
- various store rooms





(+34) 622 47 46 61

[www.palmcasas.com](http://www.palmcasas.com) - [info@palmcasas.com](mailto:info@palmcasas.com)