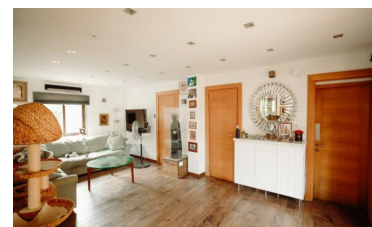
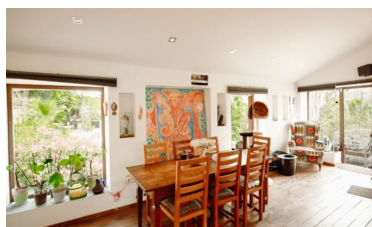
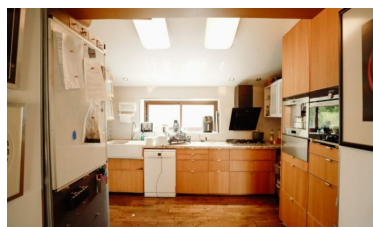


Country House in Alora



5



5



380m²



3,750m²



- Air Conditioning Hot/Cold
- close to medical facilities
- Lovely Views
- Mature Garden
- Short Drive To Bars/Restaurants
- Various Terraces
- Close to all Amenities
- Close to schools
- Mains Electricity
- Nearest Airport Malaga
- Short Drive To Shops
- Close To Bus Station/Stop
- Country Walks
- Mains water
- Pool
- Solar Hot Water

(+34) 622 47 46 61

www.palmcasas.com - info@palmcasas.com



(+34) 622 47 46 61

www.palmcasas.com - info@palmcasas.com