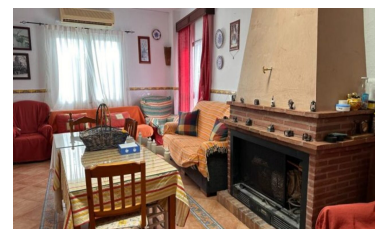
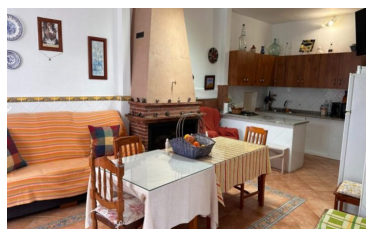
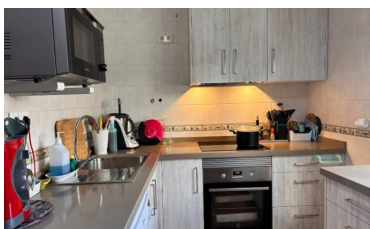
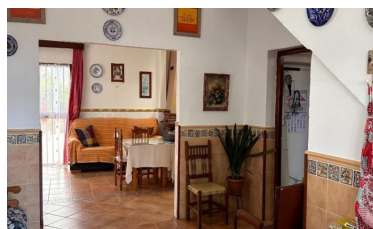


Country House in Alora



2



2



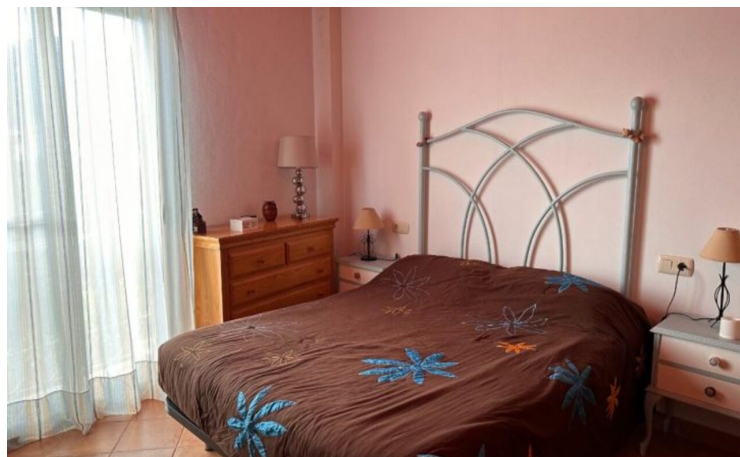
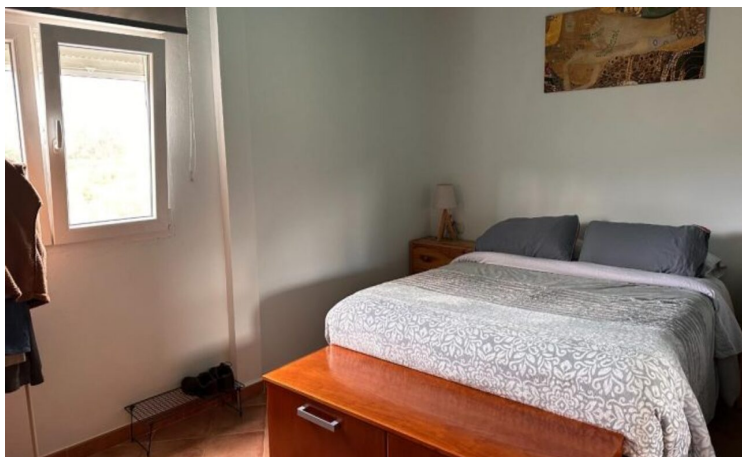
183m²



1,686m²



- Air Conditioning Hot/Cold
- close to medical facilities
- Mains Electricity
- Outside Kitchen
- Private pool
- Solar Panel/s
- BBQ
- Fireplace
- Nearest Airport Malaga
- Parking Space
- Short Drive To Bars/Restaurants
- Well/Bore Hole
- Close To Bus Station/Stop
- Fruit Trees
- outbuildings
- Private Garage
- Short Drive To Shops



(+34) 622 47 46 61

www.palmcasas.com - info@palmcasas.com