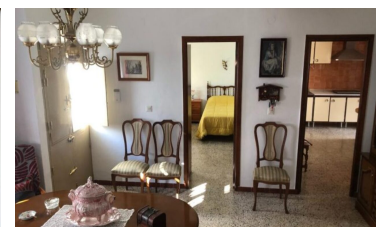
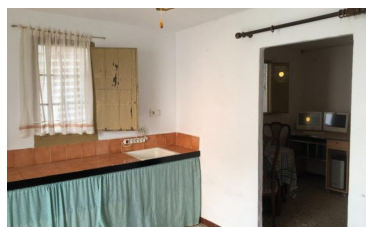
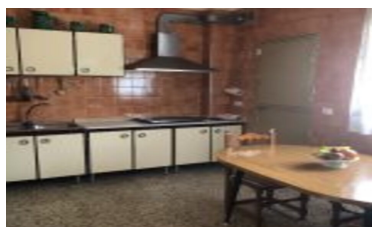
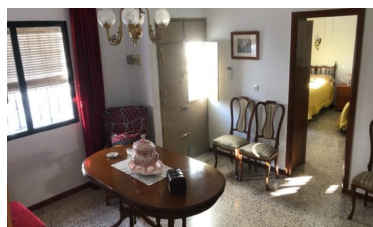


Town house in Alora



3



1



162m²



226m²



N/A

- Close To Bus Station/Stop
- Fruit Trees
- Mains water
- Storage room
- Walk to shops

- close to medical facilities
- Garden
- Nearest Airport Malaga
- traditional village
- Washing Machine

- Close to schools
- Mains Electricity
- Private Garage
- Walk To Bars/Restaurants
- workshop



(+34) 622 47 46 61

www.palmcasas.com - info@palmcasas.com