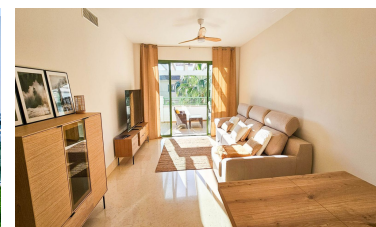
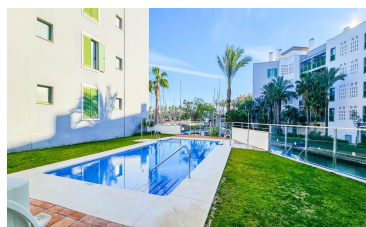
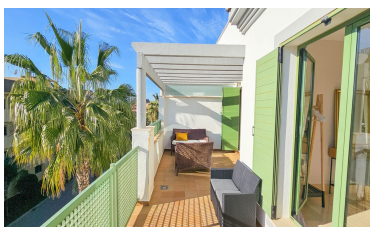
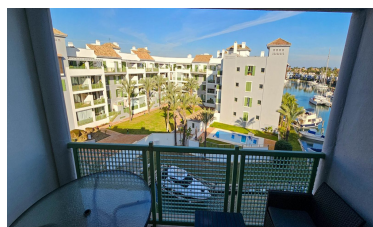


Apartment in Sotogrande Marina



2



2



108m²



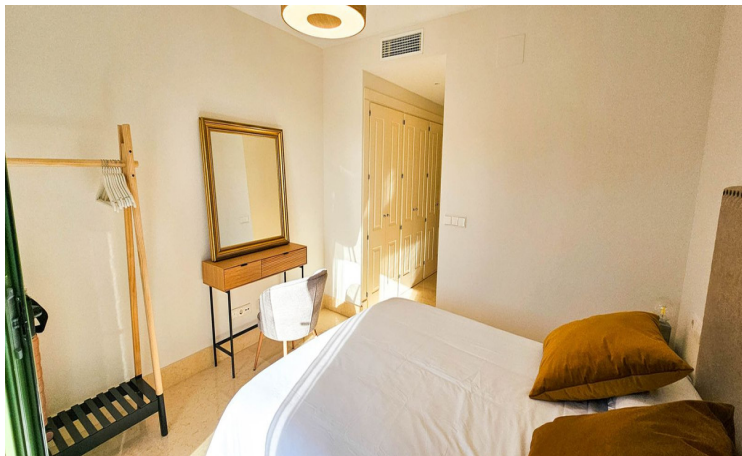
N/A



- | | | |
|---|--|---|
| <ul style="list-style-type: none"> • Category - Bargain • Features - Double Glazing • Features - Fitted Wardrobes • Features - Private Terrace • Garden - Communal • Parking - Street | <ul style="list-style-type: none"> • Category - Resale • Features - Ensuite Bathroom • Features - Lift • Features - Utility Room • Kitchen - Fully Fitted • Security - Entry Phone | <ul style="list-style-type: none"> • Features - Covered Terrace • Features - Fiber Optic • Features - Marble Flooring • Furniture - Fully Furnished • Parking - More Than One • Utilities - Drinkable Water |
|---|--|---|

(+34) 622 47 46 61

www.palmcasas.com - info@palmcasas.com



(+34) 622 47 46 61

www.palmcasas.com - info@palmcasas.com

Additional Property Features

- ~~Views Panoramic~~
~~Views Panoramic~~