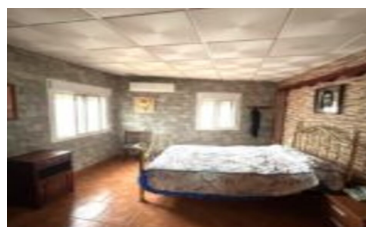
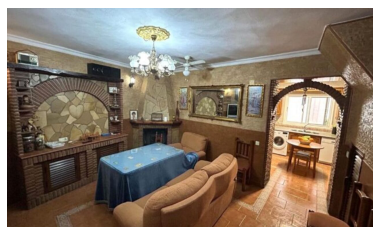


## Town house in Alora



2



1



165m<sup>2</sup>



166m<sup>2</sup>



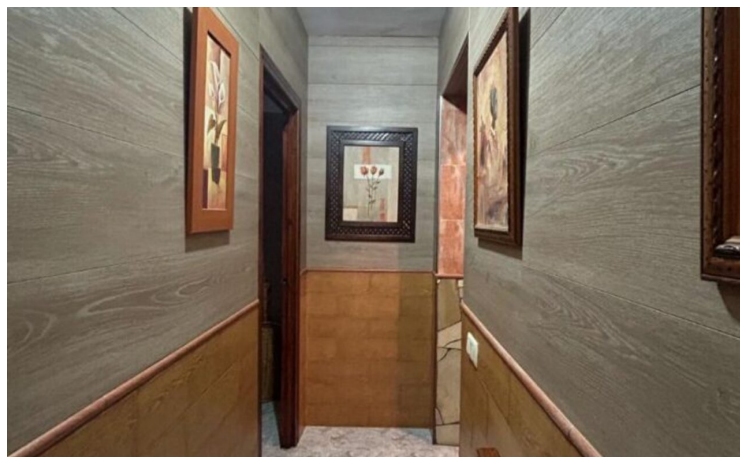
N/A

- Close to all Amenities
- Close to schools
- Mains Electricity
- Walk To Bars/Restaurants

- Close To Bus Station/Stop
- Covered Terrace
- Mains water
- Walk to shops

- close to medical facilities
- Fireplace
- Nearest Airport Malaga





(+34) 622 47 46 61

[www.palmcasas.com](http://www.palmcasas.com) - [info@palmcasas.com](mailto:info@palmcasas.com)