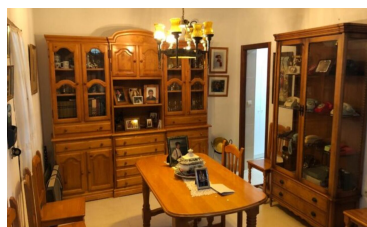
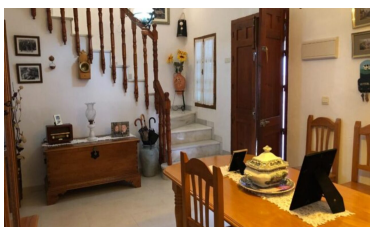


Town house in Alora



3



2



178m²



96m²



N/A

- Close to all Amenities
- Close to schools
- Mains water
- Private Garage
- Walk To Bars/Restaurants

- Close To Bus Station/Stop
- Fruit Trees
- Nearest Airport Malaga
- Roof Terrace
- Walk to shops

- close to medical facilities
- Mains Electricity
- Patio
- Village Location



(+34) 622 47 46 61

www.palmcasas.com - info@palmcasas.com