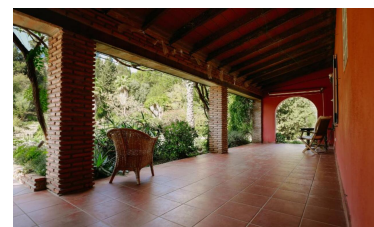
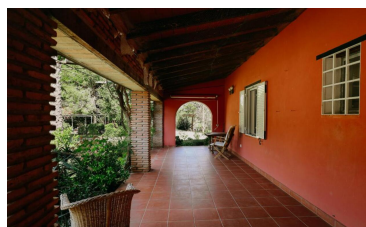


Country House in Alora



5



4



286m²



75,000m²

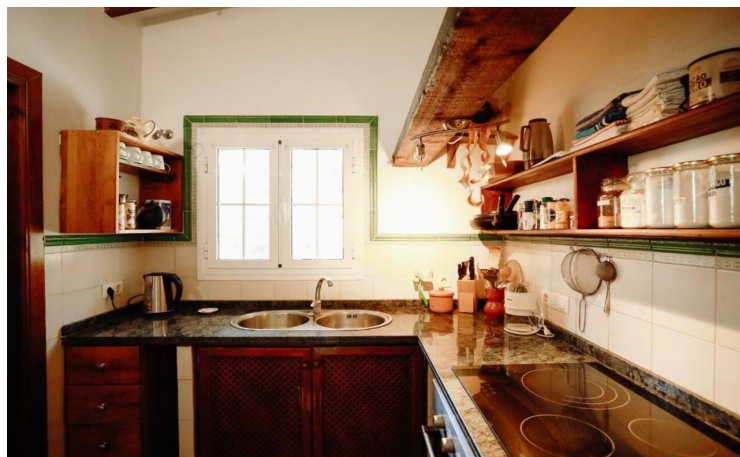


N/A

- Air Conditioning Hot/Cold
- close to medical facilities
- Hills and Mountains
- Mains Electricity
- Short Drive To Shops

- Close to Airport
- Close to schools
- Internet Available
- Nearest Airport Malaga
- solar heating

- Close to all Amenities
- Double glazed windows
- Irrigation system
- Short Drive To Bars/Restaurants
- Well/Bore Hole



(+34) 622 47 46 61

www.palmcasas.com - info@palmcasas.com