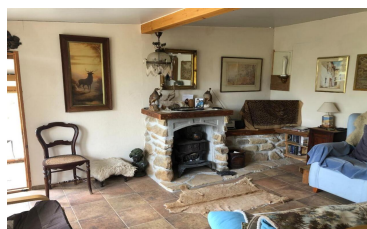


Country House in Alora



3



1



500m²

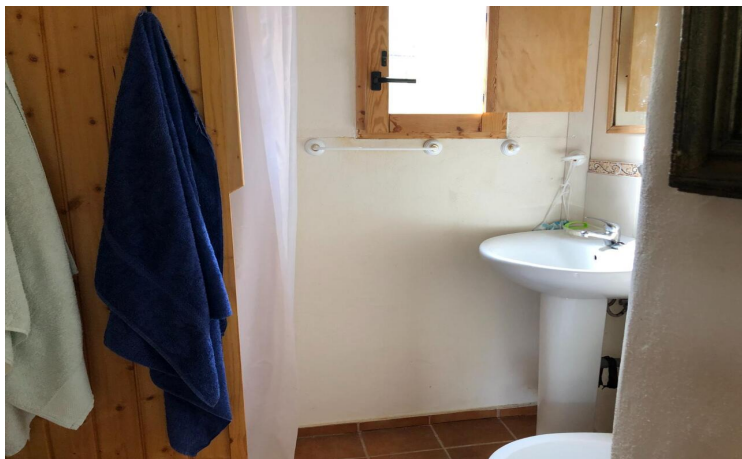


6,000m²



N/A

- Close to all Amenities
- Close to schools
- Internet Available
- Nearest Airport Malaga
- Short Drive To Bars/Restaurants
- Close To Bus Station/Stop
- Fruit Trees
- Lovely Views
- outbuildings
- Well/Bore Hole
- close to medical facilities
- Garden
- Mains Electricity
- Parking Space
- wood burner



(+34) 622 47 46 61

www.palmcasas.com - info@palmcasas.com