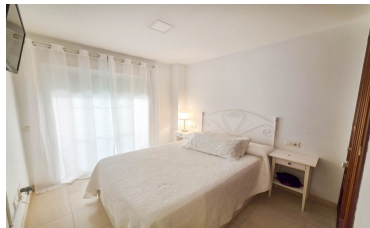


Apartment in San Luis de Sabinillas



2



2



68m²



N/A



- Category - Cheap
- Features - Covered Terrace
- Features - Lift
- Furniture - Part Furnished
- Orientation - South West
- Setting - Close To Schools

- Category - Resale
- Features - Ensuite Bathroom
- Features - Private Terrace
- Kitchen - Fully Fitted
- Parking - Underground
- Setting - Close To Sea

- Condition - Excellent
- Features - Fitted Wardrobes
- Features - Utility Room
- Orientation - South
- Pool - Communal
- Setting - Close To Shops



(+34) 622 47 46 61

www.palmcasas.com - info@palmcasas.com

Additional Property Features

- ~~Views~~ Electricity