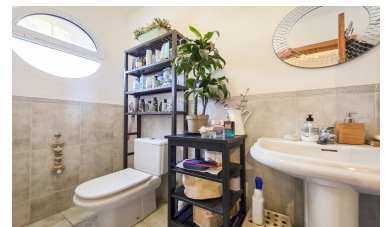


Town house in Manilva



3



2



111m²



N/A



- Category - Resale
- Features - Fitted Wardrobes
- Features - Storage Room
- Furniture - Part Furnished
- Parking - Covered
- Security - Gated Complex
- Features - Double Glazing
- Features - Marble Flooring
- Features - Utility Room
- Garden - Communal
- Parking - Garage
- Utilities - Electricity
- Features - Ensuite Bathroom
- Features - Private Terrace
- Features - WiFi
- Kitchen - Fully Fitted
- Parking - Private
- Views - Country



(+34) 622 47 46 61

www.palmcasas.com - info@palmcasas.com

Additional Property Features

- Views - ~~Mountainic~~