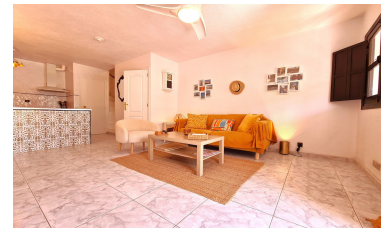


Town house in Manilva



2



2



70m²



20m²



- Category - Beachfront
- Features - Covered Terrace
- Features - Private Terrace
- Garden - Communal
- Parking - Street
- Utilities - Electricity
- Category - Holiday Homes
- Features - Fiber Optic
- Features - Solarium
- Garden - Private
- Security - Gated Complex
- Utilities - Gas
- Category - Investment
- Features - Near Transport
- Furniture - Fully Furnished
- Kitchen - Fully Fitted
- Utilities - Drinkable Water
- Utilities - Telephone



(+34) 622 47 46 61

www.palmcasas.com - info@palmcasas.com

Additional Property Features

- Views - ~~Garden~~