

Villa in Valle Romano



3



3



385m²



556m²

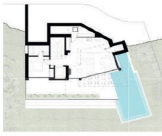


- Climate Control - Air Conditioning
- Climate Control - U/F Heating
- Features - Fitted Wardrobes
- Orientation - South
- Setting - Close To Golf
- Views - Country
- Climate Control - Cold A/C
- Condition - New Construction
- Orientation - East
- Orientation - West
- Setting - Close To Sea
- Views - Garden
- Climate Control - Hot A/C
- Features - Covered Terrace
- Orientation - North
- Pool - Private
- Setting - Close To Town
- Views - Mountain



**PLANTA ACCESO SUPERIOR
SUPERIOR ACCESS FLOOR**

Dormitorio principal / *Master bedroom* - 12.20 m²
Vestidor / *Dressing room* - 3.70 m²
Terraza 1 / *Terrace 1* - 6.40 m²
Baño 1 / *Bathroom 1* - 6.40 m²
Porche 1 / *Porch 1* - 5.20 m²

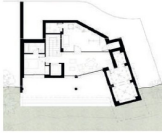


**PLANTA NOBLE INFERIOR
LOWER NOBLE FLOOR**

Salón / *Living room* - 24.00 m²
Cocina / *Kitchen* - 13.90 m²
Dormitorio 1 / *Bedroom 1* - 10.20 m²
Baño 2 / *Bathroom 2* - 4.70 m²
Porche 2 / *Porch 2* - 13.10 m²
Terraza 2 / *Terrace 2* - 25.10 m²
Piscina / *Pool* - 36.80 m²
Aseo / *Toilet* - 1.60 m²

VILLA DAYDREAM GOLF

Valle Románico - Estación



**PLANTA SÓTANO
BASEMENT FLOOR**

Gimnasio / *Gym* - 21.80 m²
Salón de juegos / *Playroom* - 20.60 m²
Bodega / *Wine cellar* - 19.70 m²
Sauna & Baño / *Spa & Bathroom* - 4.60 m²
Dormitorio / *Bedroom* - 9.90 m²
Aseo / *Toilet* - 3.60 m²

Additional Property Features

- Views - Panoramic